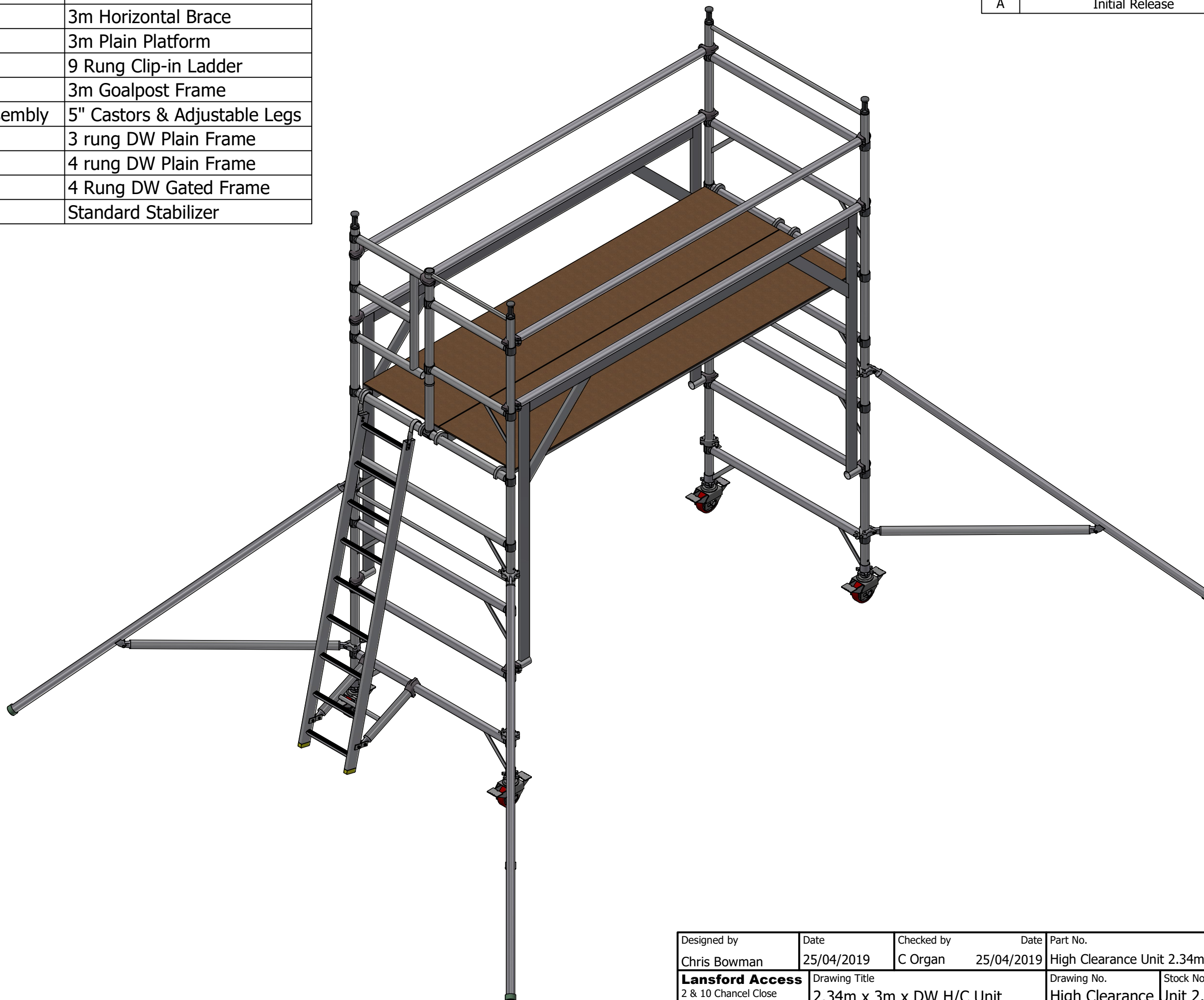


PARTS LIST

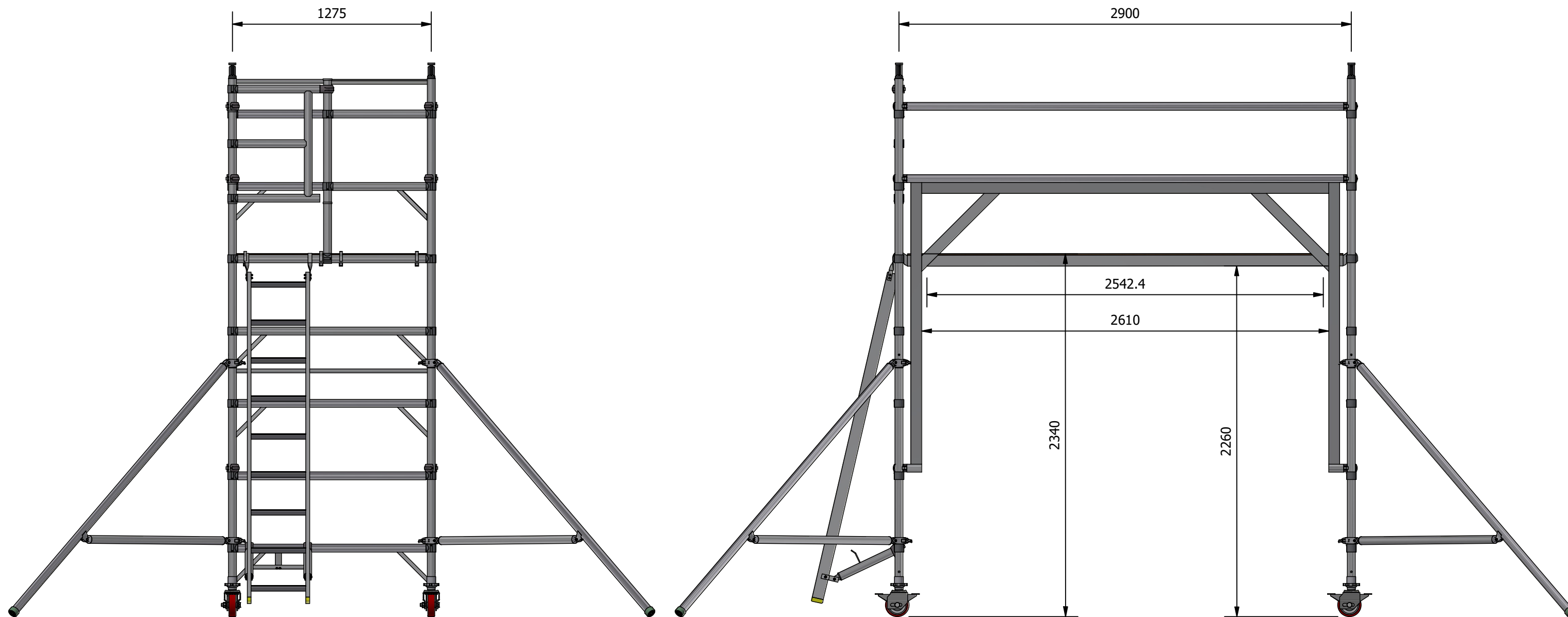
REVISION HISTORY

ITEM	QTY	PART NUMBER	DESCRIPTION
4	2	BHK3	3m Horizontal Brace
5	2	PKP3	3m Plain Platform
6	1	LKC9	9 Rung Clip-in Ladder
7	2	FGP3	3m Goalpost Frame
8	4	K5CR & KALA Assembly	5" Castors & Adjustable Legs
9	2	FKD3	3 rung DW Plain Frame
10	1	FKD4	4 rung DW Plain Frame
11	1	FGD4	4 Rung DW Gated Frame
12	4	SKS1	Standard Stabilizer

REV	DESCRIPTION	DATE
A	Initial Release	25.04.2019



Designed by Chris Bowman	Date 25/04/2019	Checked by C Organ	Date 25/04/2019	Part No. High Clearance Unit 2.34m x 3m x DW	Weight 100kg
Lansford Access 2 & 10 Chancel Close Eastern Ave Gloucester GL4 3SN 01452 520144		Drawing Title 2.34m x 3m x DW H/C Unit		Drawing No. High Clearance	Stock No. Jnit 2.34m x 3m x DW
Dimensions in mm General part tolerance +/- 0.5mm All other tolerances +/- 1mm Unless Otherwise Stated		This drawing is the property of the manufacturer and must not be copied or reproduced except with their express permission nor may the design or any information shown thereon be disclosed to any third party.		Sheet Size A3	Sheet 1 / 2



Designed by Chris Bowman	Date 25/04/2019	Checked by C Organ	Date 25/04/2019	Part No. High Clearance Unit 2.34m x 3m x DW	Weight 1200kg	
Lansford Access 2 & 10 Chancel Close Eastern Ave Gloucester GL4 3SN 01452 520144		Drawing Title 2.34m x 3m x DW H/C Unit		Drawing No. High Clearance	Stock No. Jnit 2.34m x 3m x DW	
Dimensions in mm General part tolerance +/- 0.5mm All other tolerances +/- 1mm Unless Otherwise Stated		This drawing is the property of the manufacturer and must not be copied or reproduced except with their express permission nor may the design or any information shown thereon be disclosed to any third party.			Sheet Size A3	Sheet 2 / 2